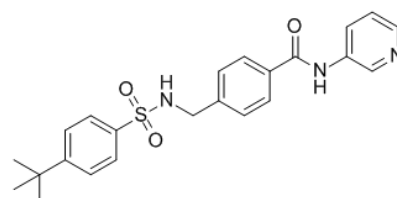


**Product Name** : STF-31  
**Cat. No.** : PC-45543  
**CAS No.** : 724741-75-7  
**Molecular Formula** : C<sub>23</sub>H<sub>25</sub>N<sub>3</sub>O<sub>3</sub>S  
**Molecular Weight** : 423.5279  
**Target** : Glucose Transporter (GLUT)  
**Solubility** : DMSO: ≥ 34 mg/mL



## Biological Activity

STF-31 is a selective **GLUT1** inhibitor with IC<sub>50</sub> of 1 μM, does not bind to other glucose transporters.

STF-31 selectively kills RCCs by specifically targeting glucose uptake through GLUT1 and exploiting the unique dependence of these cells on GLUT1 for survival.

STF-31 also inhibits the enzymatic activity of **NAMPT** in a biochemical assay in vitro.

## References

Chan DA, et al. *Sci Transl Med*. 2011 Aug 3;3(94):94ra70.

Adams DJ, et al. *ACS Chem Biol*. 2014 Oct 17;9(10):2247-54.

**Caution: Product has not been fully validated for medical applications. Lab Use Only!**

E-mail: tech@probechem.com